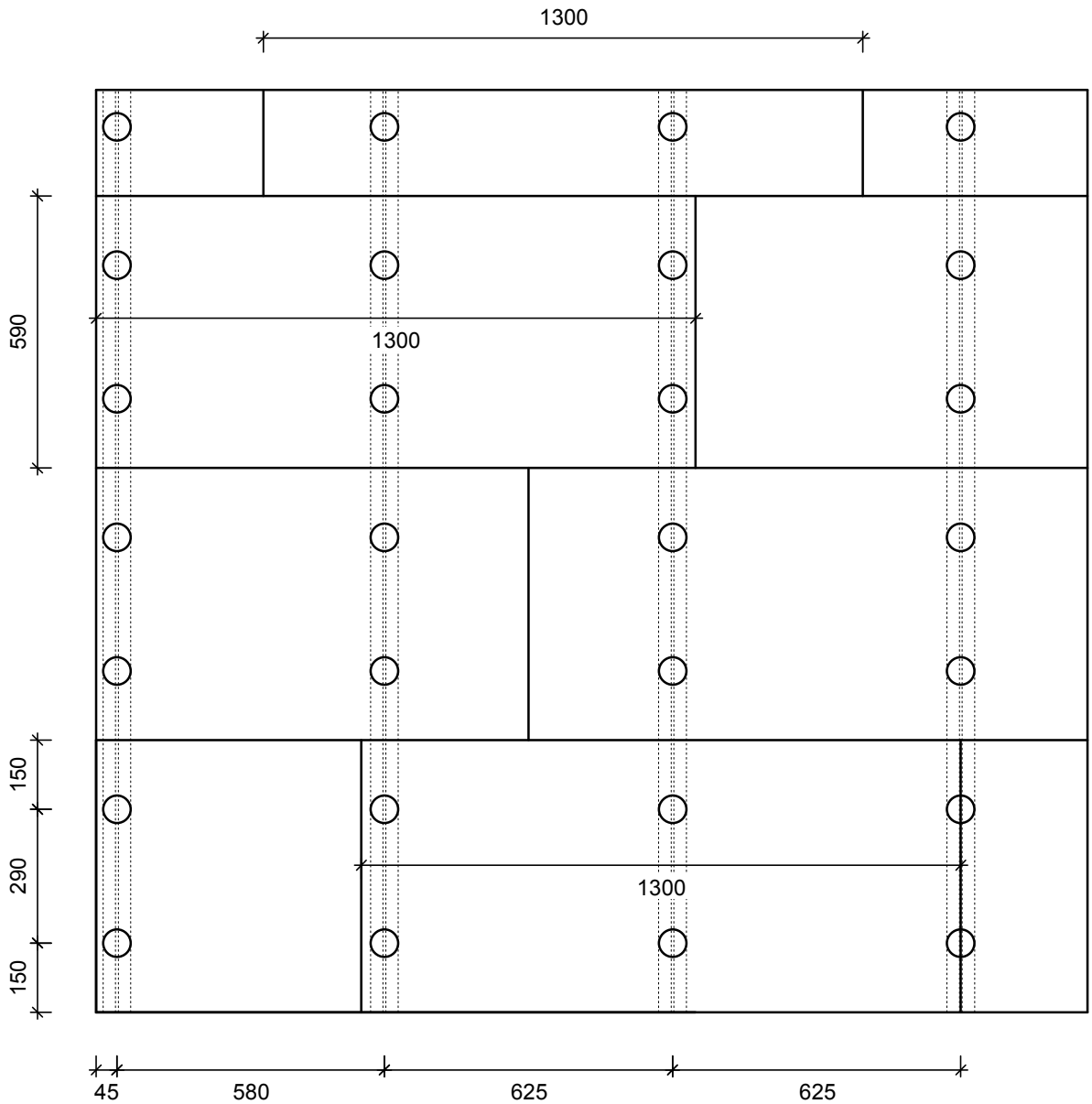
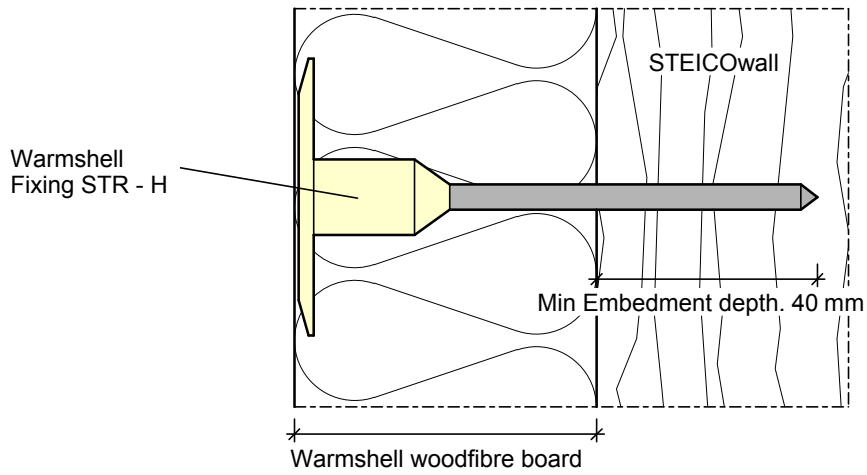


Warmshell  
Construction  
Details

lime|green

Scale 1:1.5



Warmshell Fixing - timber frame



lime|green

Scale:

1 : 15

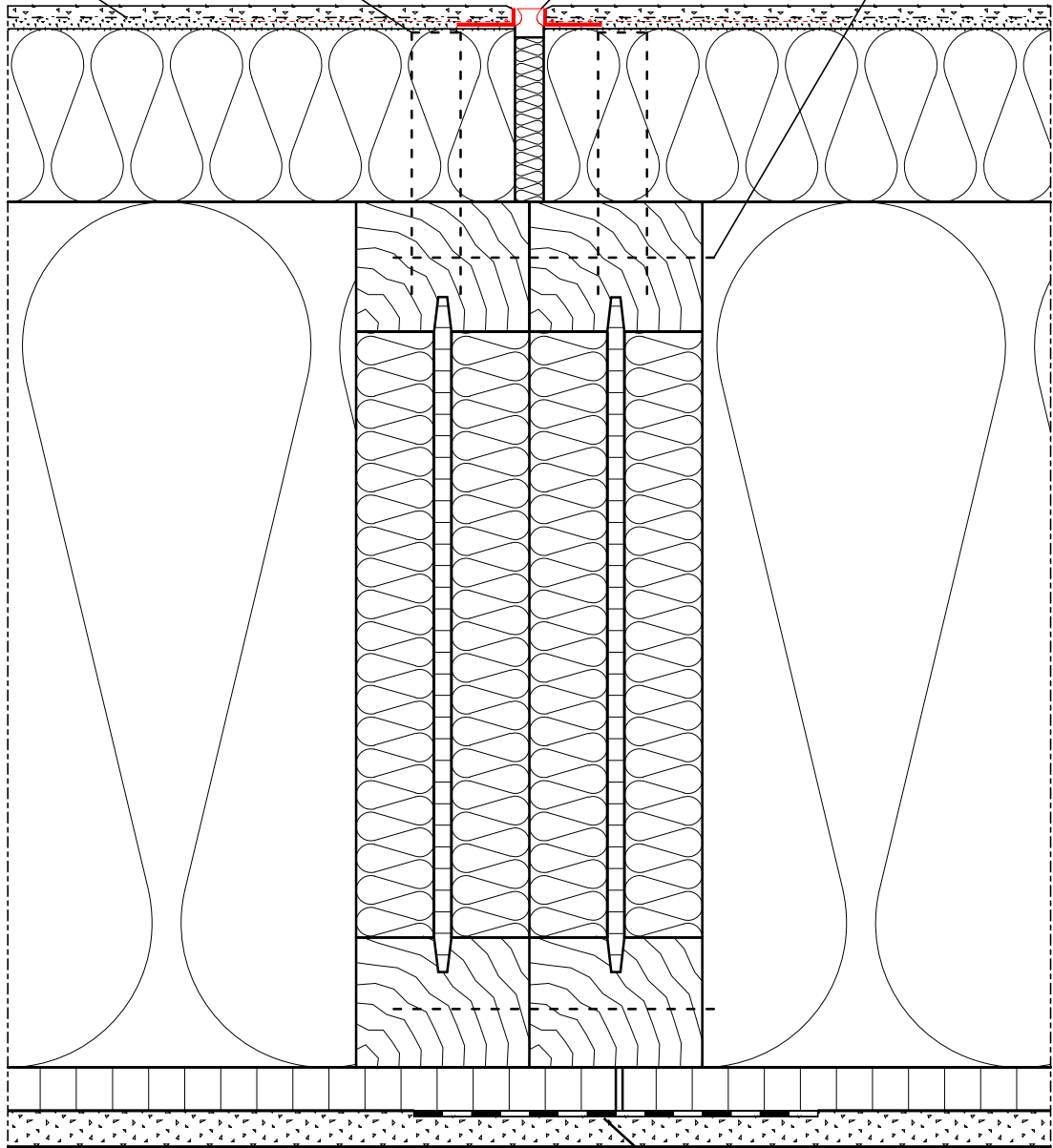
# Outside

Lime Green render system

System Fixing

Movement joint

Screw



Air Tight tape

# Inside

Warmshell surface movement joint

Scale:

1:5

**STEICO**  
natürlich bauen & wohnen

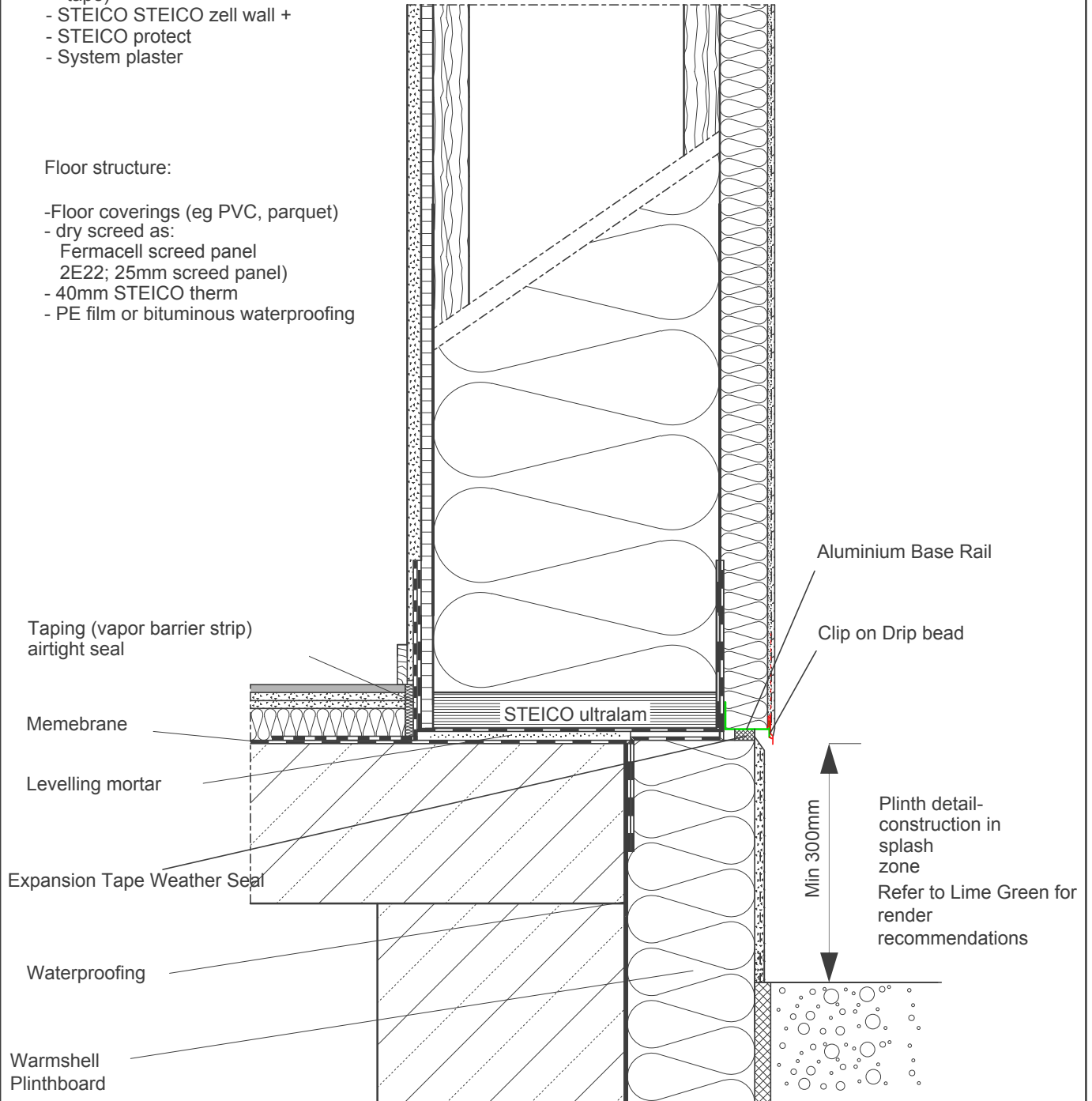
lime|green

Wall construction:

- Gypsum plasterboard
- Wood board (OSB)  
(air tight connection area  
tape)
- STEICO STEICO zell wall +
- STEICO protect
- System plaster

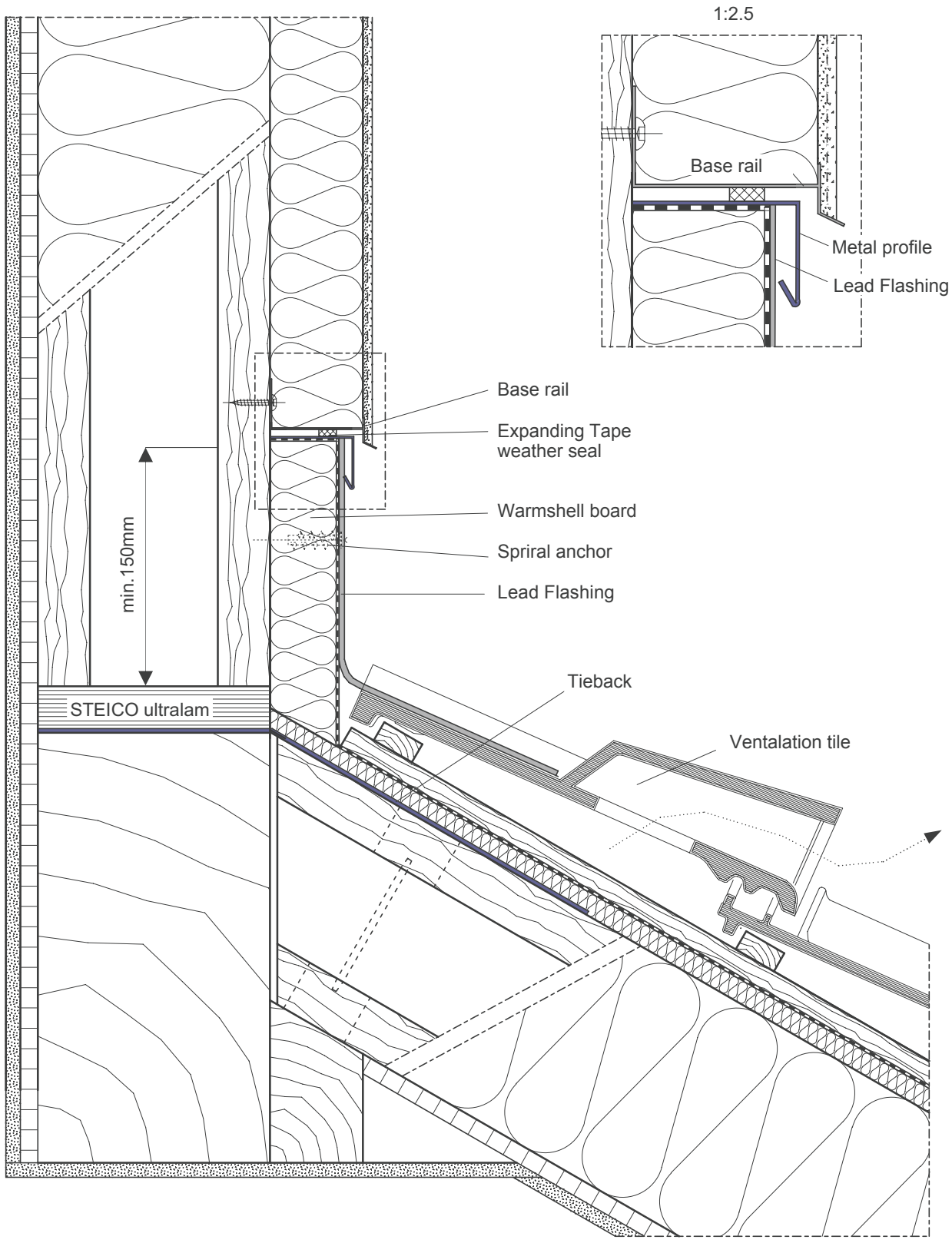
Floor structure:

- Floor coverings (eg PVC, parquet)
- dry screed as:  
Fermacell screed panel  
2E22; 25mm screed panel)
- 40mm STEICO therm
- PE film or bituminous waterproofing



Warmshell Plinth - timber frame

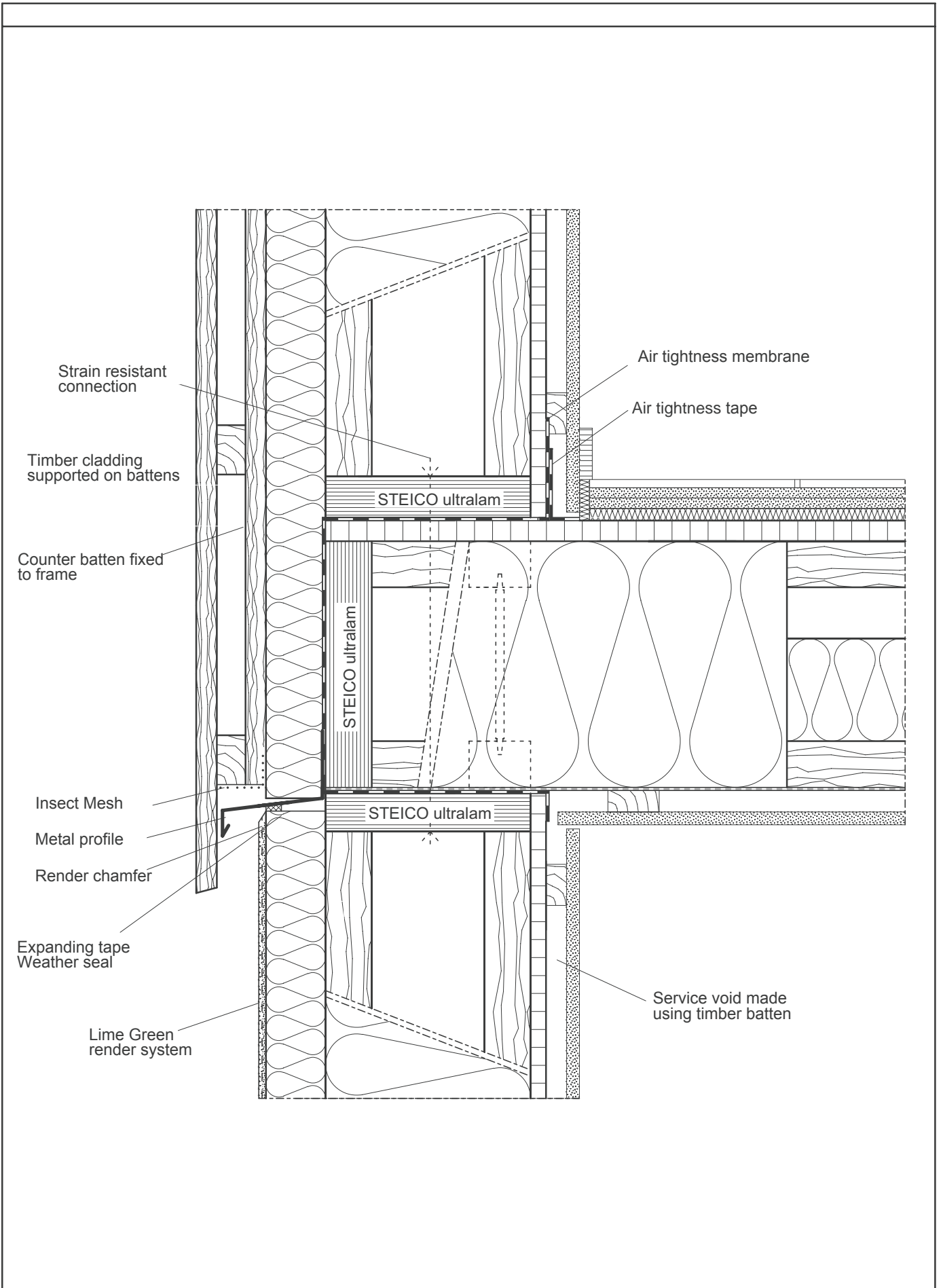
		Scale:	1:5		

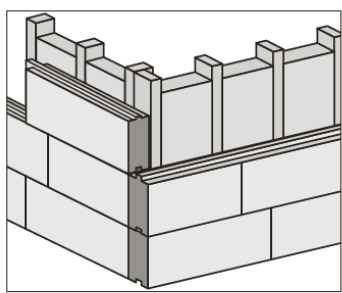
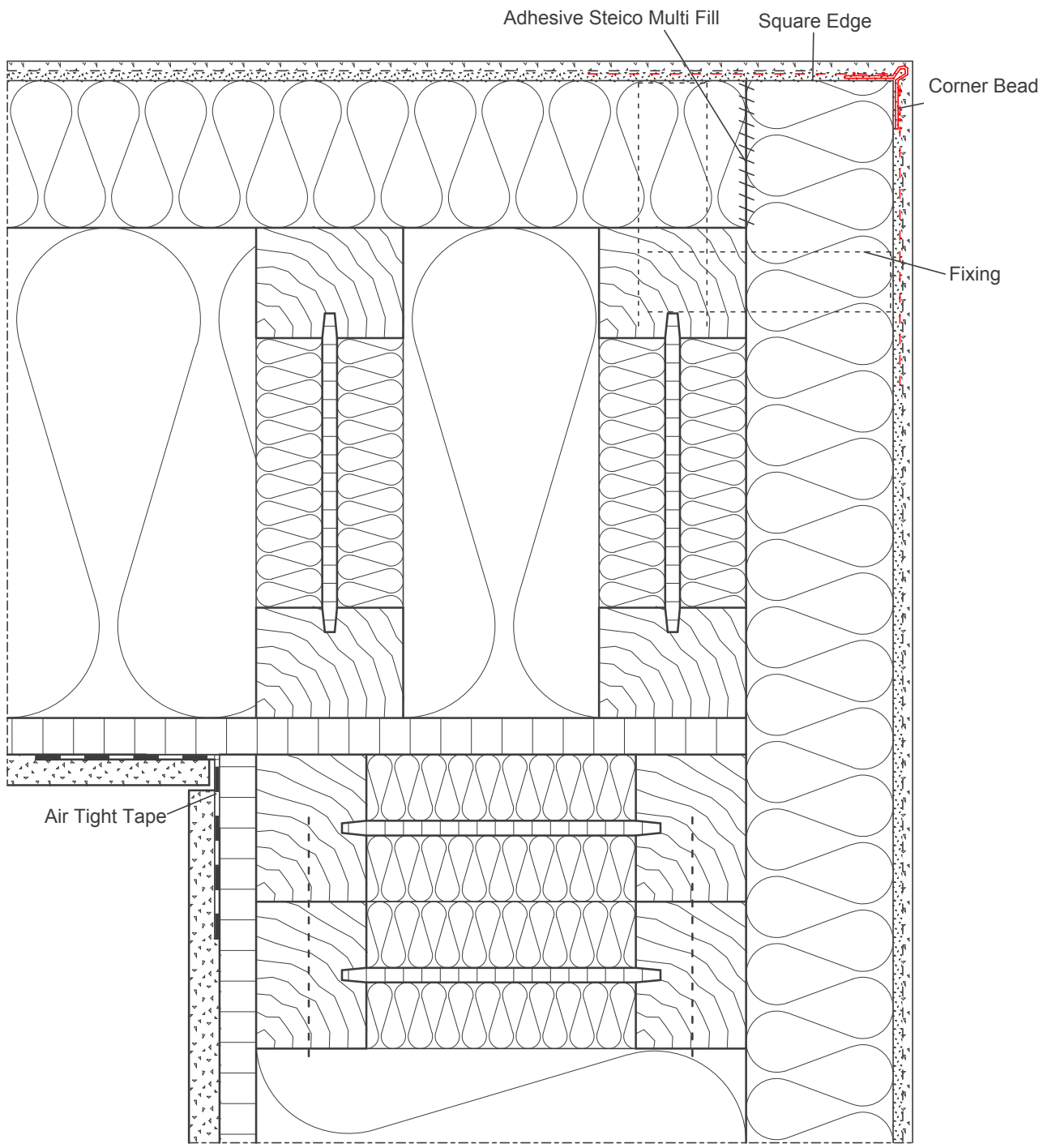


Warmshell roof junction

		Scale:	1:5





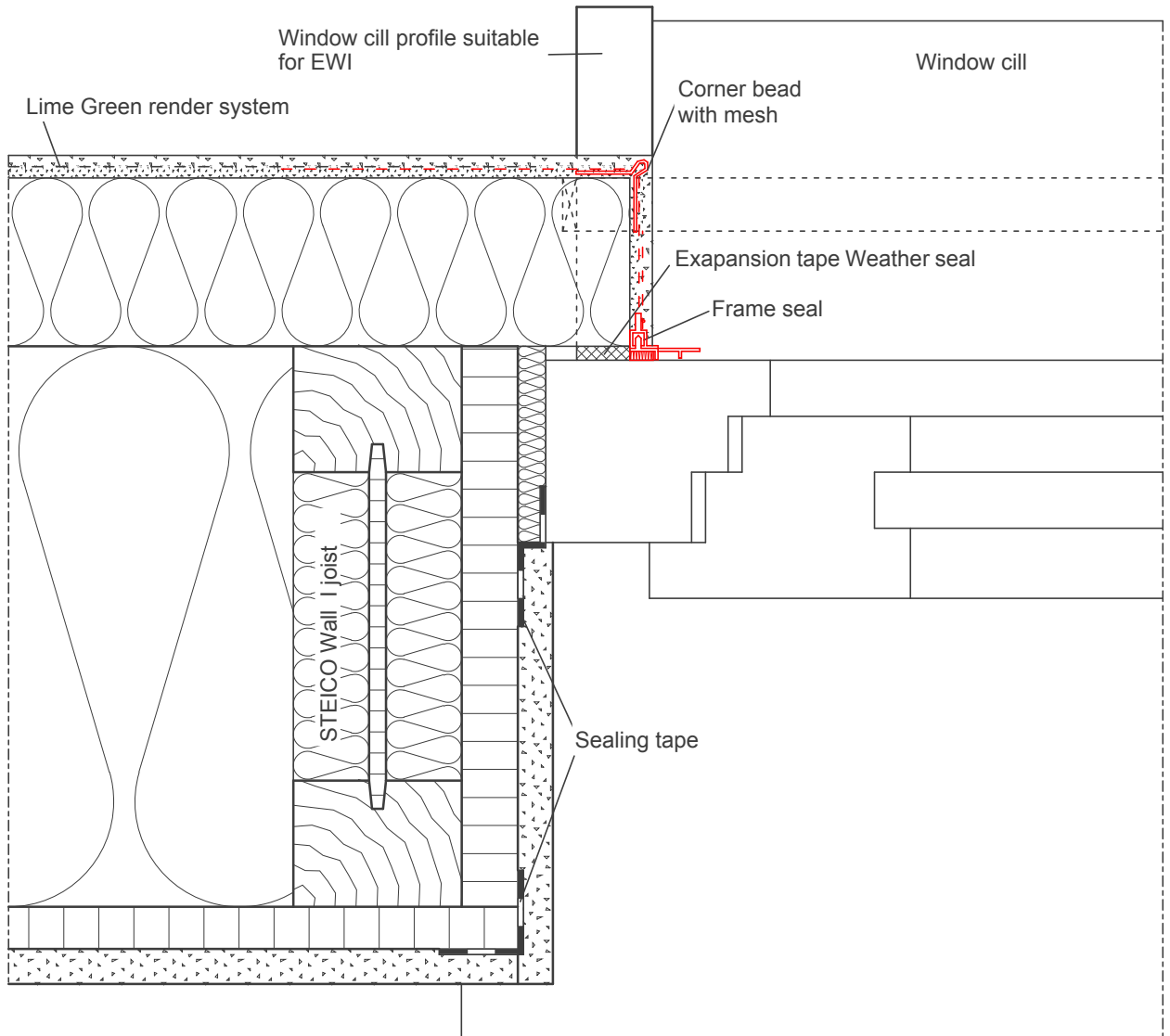



Warmshell Corner detail timber frame



# Outside

ca. 15 - 20 mm



Wall construction:

- Plasterboard with finish
- Racking board (OSB) (with sealing tape on joints)
- STEICO flex
- STEICO protect
- Warmshell Render

# Inside

Window Jamb detail

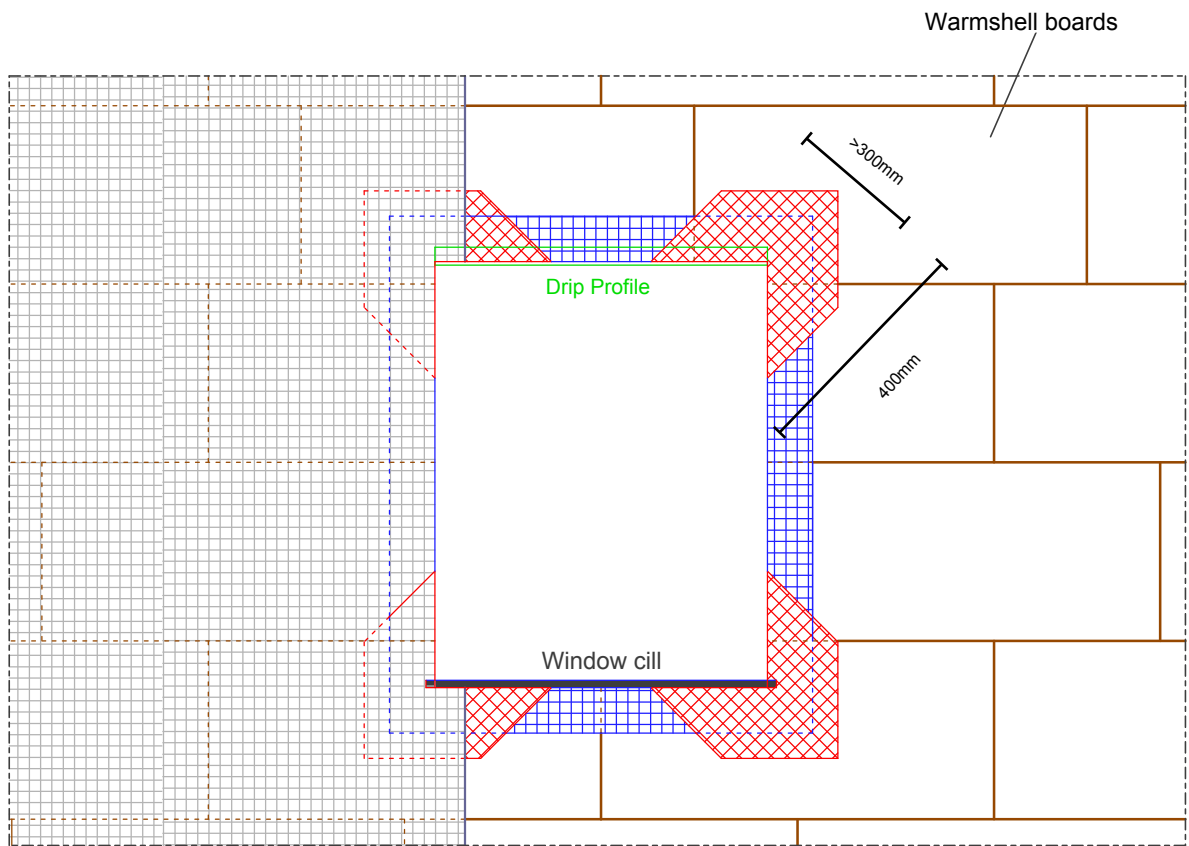
Detail Nr.:

Scale:

**STEICO**  
natürlich bauen & wohnen

lime|green





#### Glass fibre mesh placement

- 1. Corner beading with mesh
- 2. Corner peices set 45° Cut from 660mesh
- 3. Warmshell 660 mesh overlapped 100mm

Warmshell mesh placement